



## **WELCOME BACK!**

It has been great welcoming back all our tamariki. Children are so excited to be here and have loved connecting with staff and their friends.

Key Level 2 reminders for parents:

- If coming on-site for any reason you must sign-in at the front desk.
- We encourage visiting adults (including parents) to wear masks when entering the school grounds as per the recommendation from the Ministry of Health. This is not mandatory, but highly recommended
- Only 2 parents/visitors in the office at a time.
- Please also sign in using the Covid tracer app. This is found at the front gate and in the office.
- Parents using Ruru in the afternoon, please contact Lyn when you arrive to pick up and Lyn will send children to you.

**Please remember to keep your child/ren home if they are unwell.**



A huge welcome to Duncan in Kereru and Kaelannii in Pukeko who start with us on Monday.

We know that you will love being at Maungakamea School!

We also welcome Quinn and Elliot who are visiting Piwakawaka before they start school next term.



Please return all home learning material and devices if you haven't already done so.

## **THANK YOU**

- To all our parents/caregivers and whanau for the amazing support you have shown your children throughout lockdown
- To all our tamariki for the huge effort that has gone into participating in Distance Learning and for the resilience that is needed during lockdown.
- To all the teachers and staff of our amazing school. Your dedication to your students and their whanau was felt throughout lockdown.

# Maungakaramea School – ALERT LEVEL 2

## At a Glance

RETURN TO SCHOOL	School is open for all children from Thursday 9th September
CLASSROOMS	<p>Under Alert Level 2 hand sanitiser will be provided in every classroom. Hand sanitiser stations will be set up at the designated entry and exit points of each classroom and Students and Staff will use this as they enter or exit a room.</p> <p>Additional disinfectant/cloth will be available in classrooms for children and teachers to sanitise spaces and door handles throughout the school day as required. Teachers to ensure handles are sanitized after each break.</p> <p>Where possible stationery supplies should not be shared.</p> <p>Students are not to go through the office area during Level 2 unless it is for First Aid.</p>
SICK CHILDREN	Students and Staff will not attend if they are unwell. Students and Staff who become unwell during the school day will be sent home.
RURU (BEFORE & AFTER SCHOOL CARE)	<p>-Ruru will be open from Thursday 9th September.</p> <p>-Please contact Lyn when you arrive to pick up and Lyn will send children to you.</p>
AT PICK UP & DROP OFF	<p>Under Alert Level 2 parents and caregivers will not be allowed in classrooms. No parents on site at drop-off or pick-up time. Parents must wait just inside or outside the school gate.</p> <p>Other than Before School Care, students are not to be onsite before 8.15am.</p> <p>If parents do wish or need to come on site they must go to the office in the first instance.</p>
VISITING THE OFFICE	<p>School Office- This will be a maximum of two parents in at a time during Level 2.</p> <p>Parents and visitors must maintain 2m distance while on-site at all times.</p>
STAFFING CLASS BUBBLES	<p>There is no bubble concept at Alert Level 2 so there are no restrictions on groups of students mixing with others on site.</p> <p>Physical Distancing – Physical distancing is a good precaution to prevent the spread of disease. This is done by keeping children out of others “Moist Breath Zone” by separating children in class as best we can.</p> <p>Children, young people and staff should be far enough away from each other so that they are not breathing on or touching each other, coupled with good hygiene practices and regular cleaning of commonly touched surfaces.</p>

ASSEMBLIES	<p>Assemblies- there will be no school assemblies as there is potential for “High-Risk Activities” (MOE):</p> <p>If any “High-Risk Activities” are to be carried out e.g. Kapahaka, these must be done in a well-ventilated area or outdoors</p>
IN THE PLAYGROUND	<p>Physical education classes and break time activities can include access to sports equipment including playgrounds but hygiene practice should be observed before and after play e.g. washing and drying hands.</p> <p>Drinking fountains will be turned on, however students are encouraged to bring their own.</p> <p>Teachers to encourage students to only use their drink bottle.</p>
CLEANING & HYGIENE	<p>Face Coverings:</p> <ul style="list-style-type: none"> <li>-Face coverings are not mandated for use when in schools</li> <li>-Students or staff wanting to use a face covering have the right to do so and must be respected.</li> <li>-Students who choose to wear a mask, must wear it correctly and the mask must be acceptable to us as a school. If we are concerned about the mask we will supply the child with an approved one for them to wear.</li> </ul> <p>Our Cleaner will complete daily cleans in line with the Ministry of Health guidelines which include:</p> <ul style="list-style-type: none"> <li>• Cleaning door handles</li> <li>• Wiping all exposed surfaces</li> </ul> <p>In an Alert Level 2 we will continue to model good hygiene practices (coughing into your elbow, handwashing and drying) and regular cleaning of commonly touched surfaces.</p>
MOVEMENT IN & OUT OF SCHOOL	<p>We will be limiting all non-essential curriculum activities both in and outside of school.</p> <ul style="list-style-type: none"> <li>• No parents/caregivers allowed in classrooms during Level 2 or on school grounds where possible.</li> <li>• There will be no external trips during Level 2 where there will be a gathering of more than 50 people inside or 100 people outside</li> <li>• Visitors will be permitted on site with the Principal’s consent.</li> <li>• There are no restrictions on student school visits.</li> </ul> <p>Events on-site:</p> <p>Events on-site can only be for educational purpose only</p>
BUSES	<p>From the beginning of Alert Level 2, bus routes will return to normal with the following conditions:</p> <ul style="list-style-type: none"> <li>- All health and safety requirements as set by the MOE are followed</li> <li>- The school must maintain excellent recording of students using the bus service</li> </ul>
FOOD	<p>Friday School Lunches will be cancelled until further notice</p> <p>The school will not be providing any food during Level 2. All students must come to school with a suitable amount of food from home for the day.</p>

# COUNTRY DAY TROPHIES 2020

Due to unforeseen circumstances our trophies were not handed out at the end of last year.

We will be getting them inscribed and handing them out shortly.

Congratulations to the following students who won an award at last years Country day:



Elise- Indoor Show trophy

Elise- Reuben Potter Pet Trophy

Hamish- Twincoast Helicopters Champion Goat

Sam and Zeke- Most Points Junior Indoor Exhibits

Winnie- Hudson Trophy: 1st Year Competitor Most points

Sienna- A.W Telfer Memorial Shield: Light Breed



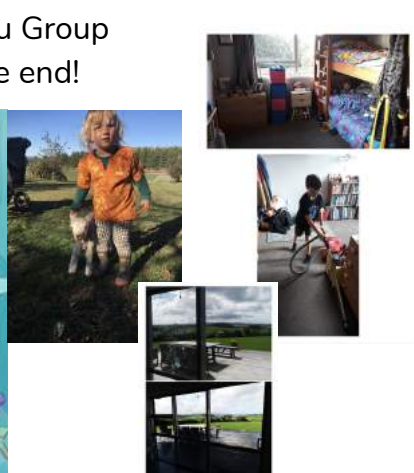
If your child's name is not mentioned here and you know that they won a trophy for the 2020 Country Day, please contact Simon or Bekki in the office.

Due to the late timing that students will be receiving their trophies, children will keep these until later in term 4 and handed in prior to school prizegiving. The Country Day trophies will not be at Country Day this year.

## WHANAU GROUP LOCKDOWN CHALLENGE



Congratulations Nikau for taking out the Whanau Group Challenge!! It was a close run race towards the end!



## NETBALL

It was great to have so many students playing netball this season, with three teams playing for Maungakaramaea:

MGK Minis (Yr 0-2)

MGK Magic (Yr 3-4)

MGK Mystics (Yr 5+)



A huge thank you to the coaches for giving up their time for training and games - Nicole Lamb, Briar Hart & Anna Twaddle.

If you have any skorts, balls or other equipment borrowed from the school for netball, please return these to the office.

### People of the Week:

All our students who participated in any of the Whānau Group challenges.

Thank you

# SCHOOL NOTICES

## IMPORTANT DATES

**\*\*DUE TO COVID-19 ALERT LEVEL CHANGES, SOME OF OUR EVENTS MAY BE CANCELLED OR POSTPONED. WE WILL LET YOU KNOW AS SOON AS WE HAVE THAT INFORMATION\*\***

17 SEPTEMBER - SCHOOL DISCO - POSTPONED

28 SEPTEMBER - HPV DOSE 2

30 SEPTEMBER - KERERU/PUKEKO TRIP TO  
FLIP OUT & THE POOLS - POSTPONED

1 OCTOBER - END OF TERM 3

18 OCTOBER - START OF TERM 4

30 OCTOBER - COUNTRY DAY

1 NOVEMBER - TEACHER ONLY DAY

THURSDAYS - YEAR 7 & 8 TECH @ TAS

THURSDAYS - MUSIC LESSONS

ALTERNATE THURSDAYS - ASSEMBLY @  
2.30PM CURRENTLY CANCELLED

FRIDAYS - LUNCH ORDERS - CURRENTLY  
CANCELLED

ALTERNATE FRIDAYS - NEWSLETTER  
(24 SEPTEMBER)



HAPPY BIRTHDAY TO THE  
FOLLOWING STUDENTS:



## PARKING

A reminder from the fire service  
to please not park in front of the  
fire station AT ANY TIME.

Thank you.

## TEACHER ONLY DAY

We have a Teacher Only Day scheduled for Monday 1st November  
and school will be closed for instruction on this day.

Please note this day on your calendar.

Teachers will be getting together with teachers from two other  
schools and working with a facilitator on the Digital Curriculum as  
part of building our Localised Curriculum. This is part of the schools  
strategic plan for 2021.

## POSTPONEMENTS

-The School Disco scheduled for 17th September has  
been postponed until next term.

-Pukeko and Kereru's end of term trip has been postponed  
until next term.

**THE  
FINAL  
WORD**

This marks 7 weeks that I have officially been part of this awesome school. I certainly could  
have never predicted a lockdown after having only been here for 3.5 weeks.

In many ways lockdown has given me an opportunity to know students and families  
better, especially through the Whānau Group Challenges.

I have enjoyed being part of your community throughout lockdown and can see how much  
of a big family you all are.

We look forward to making the most of the next 3 weeks and hope to be at Level 0 or 1 by  
Term 4.

Ngā mihi, Simon Schuster  
Tumuaki/Principal